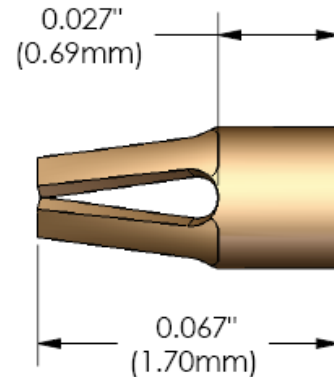
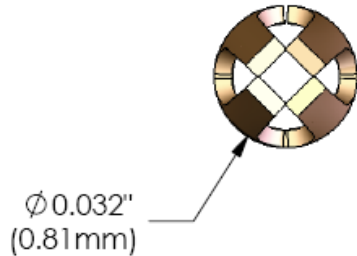
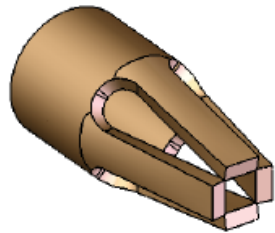


211 SERIES

FOUR FINGER CONTACT CLIPS



TECHNICAL PRODUCT DATA

WEISS-AUG PART NUMBER	CLIP TYPE	TEST PIN DIAMETER	OPERATING RANGE PIN DIAMETER	MAXIMUM INSERTION FORCE	MINIMUM WITHDRAWAL FORCE	MATERIAL
1-2-3001-21101	211	0.018" (0.46mm)	0.015" - 0.020" (0.38mm - 0.51mm)	145g	30g	C17200

NOTES:

1. ALL FORCE DATA RELATES TO UNPLATED CLIPS.
2. TESTS PERFORMED WITH POLISHED STEEL BULLET NOSE PINS.
3. 1-2-3001-21001 MANUFACTURED FROM BeCu ALLOY C17200 1/2 HARD MATERIAL, HEAT TREATED POST FORMING.

SUFFIX DEFINITIONS: "L" = LOW FORCE "SL" = SUPER LOW FORCE "UL" = ULTRA LOW FORCE "H" = HEAVY FORCE



WEISS-AUG

Precision Manufacturing by Innovative Design
Stamping, Insert Molding and Assembly

220 Merry Lane • East Hanover, NJ 07936 • USA

T. 973.887.7600 • F. 973.887.8109 • www.weiss-aug.com

ISO9002



QS9000

QUALITY IS OUR BUSINESS



PRECISION METALFORMING ASSOCIATION